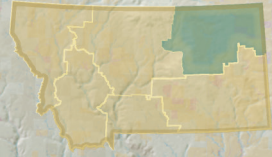
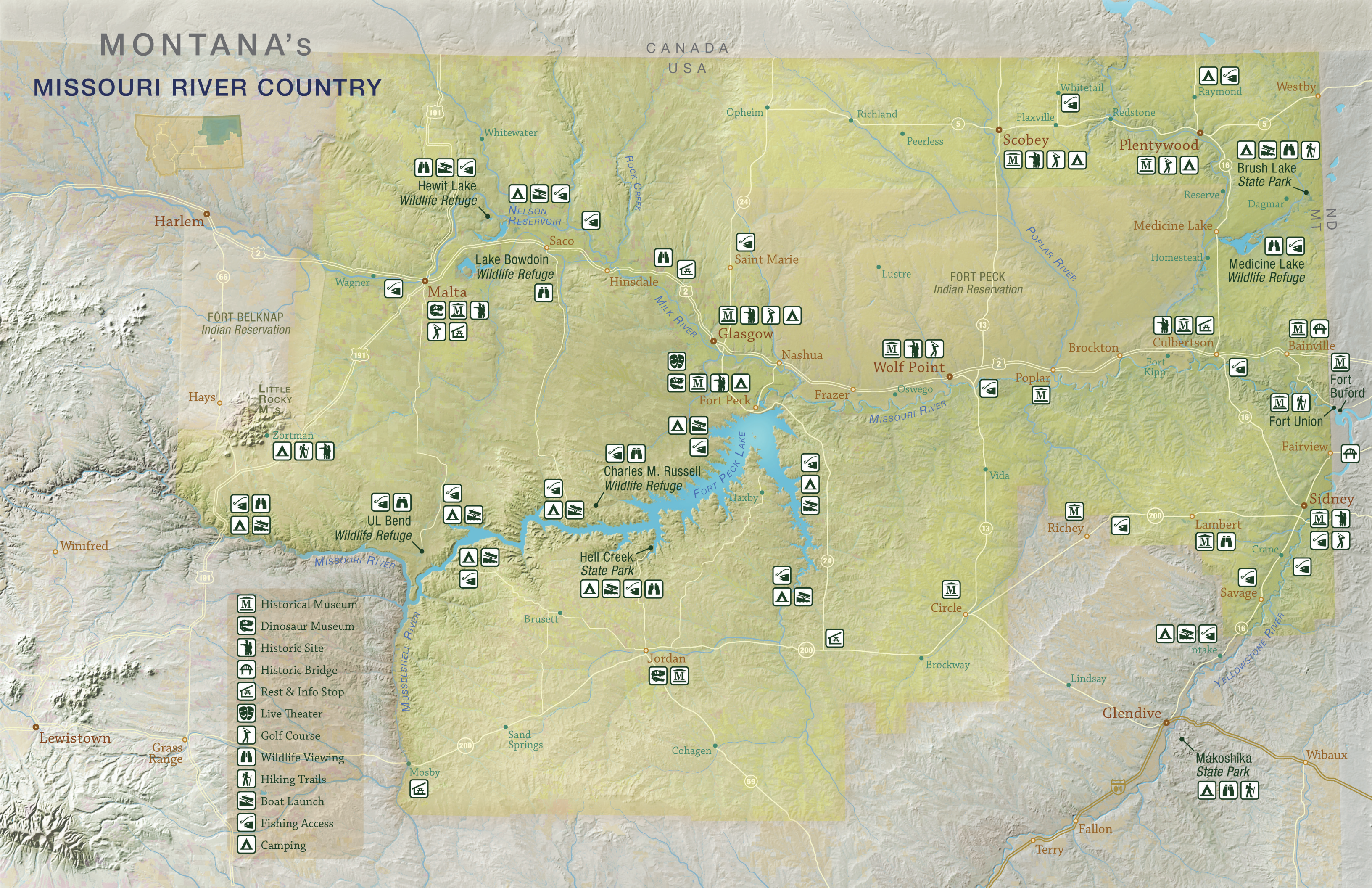


MONTANA'S MISSOURI RIVER COUNTRY



-  Historical Museum
-  Dinosaur Museum
-  Historic Site
-  Historic Bridge
-  Rest & Info Stop
-  Live Theater
-  Golf Course
-  Wildlife Viewing
-  Hiking Trails
-  Boat Launch
-  Fishing Access
-  Camping



This Is Montana's Missouri River Country...

It isn't possible to list an exact location for every recreation and visitor opportunity offered in Montana's northeast corner. You'll find much to do and see in this large landscape, so let this map be a guide to your latest adventure.



Boat Launching

Missouri River Country has numerous access sites for boat launching, camping and other water-related activities. Whether you favor Fort Peck Lake, the Missouri and Yellowstone rivers, a refuge, a reservoir or Brush Lake, page in this MRC Travel Planner will help you with more information. Many roads, especially out of Glasgow, Fort Peck and Jordan, lead you to the north, east and south sides of Fort Peck Lake. The Charles M. Russell NWR map has exact details.



Wildlife Viewing - Bird watching

Nationally known for its wild critters, Missouri River Country's refuges are legendary. The Charles M. Russell NWR is considered the crown jewel of our nation's wildlife refuge system, and Medicine Lake NWR south of Plentywood, and Bowdoin NWR, just east of Malta, are known as two of the US's finest pelican rookeries. Wildlife viewing and bird watching opportunities in each are unlimited. This northeast Montana prairie country is home to an enormous population of large and small animals and winged creatures such as... elk, deer, antelope, bighorn sheep, turkeys, burrowing owls, white pelicans, eagles, pheasants, plovers and too many more to name. For more information, reference page 56 in this MRC Travel Planner. Access to these areas can be seen on this map and as well through information obtained directly from the refuges. See the information listed on these pages.



Walking - Hiking Trails

In this land of wide, open spaces, there are very few designated walking trails. Rather, especially on the public lands of the wildlife refuges and Bureau of Land Management (BLM) terrain, the natural beauty of the landscape beckons one to stride in any direction. However, it is important to use a map and compass or GPS to track your way. Wildlife walking routes are found near the Fort Peck Interpretive Center, and from the many fishing and camping access sites on the refuges, one can strike out and find prairie magnificence. Further information on hiking possibilities can be found by contacting one of the refuge offices whose information is listed on these pages.



Dinosaur Museums

Most of Missouri River Countries local museums feature ample information on the prehistoric critters that roamed these grounds. However, the most specialized and extensive displays are found in the Fort Peck Interpretive Center, both the Great Plains Dinosaur Museum and the Phillips County Museum in Malta, and the Garfield County Museum in Jordan.



Live Theater

Several towns have movie theaters, but the Fort Peck Summer Theatre is known for its professional, live theater performances. Drawing crowds from across the state, the entertainment won't disappoint you. Call 406-228-9216 for more information on the theatre's season.



Historical Points

As one travels the main byways of Missouri River Country, every so often there will be a sign stating "Historical Site Ahead." These are informational sites and always have interesting things to say about the surrounding area. The Fort Peck Interpretive Center and Museum as well as the other museums contain many exhibits of the area's past and especially point out where the Corps of Discovery led by Captains Lewis and Clark passed. The Fort Peck area also has a couple of specific Lewis and Clark sites. Inquire at the museum. It's important to point out that some of Montana's earliest recorded history comes from the eastern fringe of the state where the Yellowstone River ends its run and meets the Missouri. Near here is the replica of the Fort Union Trading Post built in 1828. It collects a great deal of northeast Montana's history as well as details of the fur trade era and the journeys of the Corps of Discovery.



Historical Museum

Nearly every Missouri River Country town has its own museum. Each holds a treasure chest of information, and colorful displays on local and regional history as well as geology. During your travels, it is always worth your while to step inside and visit with the folks who know the area the best and love to share stories of the past.



Rest Stop and Information Area

Weary travelers can pull in, get info on what to do in MRC, have a picnic, find some shade or just a place to stretch your legs and take a good look at the landscape around you.



Historic Bridge

In 1913, to accommodate both rail and steamboat traffic, two twin lift-bridges—the Snowden across the Missouri and the Fairview across the Yellowstone—were built. As time would have it, by the time they were completed, the river ceased to be used by freight boats and the bridges were obsolete.



Golf Course

If you are a fan of golf, pack your clubs and work your way across Missouri River Country. Six diverse and inviting courses await your challenge. Start your trip in Malta, then on to Glasgow and Wolf Point. From here, head north to Scobey and Plentywood before turning south and rounding out your adventure at the 18-hole, 72-par course in Sidney.



Fishing Access

From rivers to ponds, creeks, reservoirs and lakes (one is enormous), ancient paddlefish, walleye, small-mouth bass, rainbow trout, pike and perch stand ready to test your abilities. What are you waiting for? Come on out and give it a try. See page in this MRC Travel Planner for more information.



Camping

Vacationing? Hunting? Traveling through? If you need a place to pitch your tent or park an RV, we've got it for you. From primitive to full service, free or paid, on the water or the prairie with a view, come and stay a spell. See page in this MRC Travel Planner for more information.